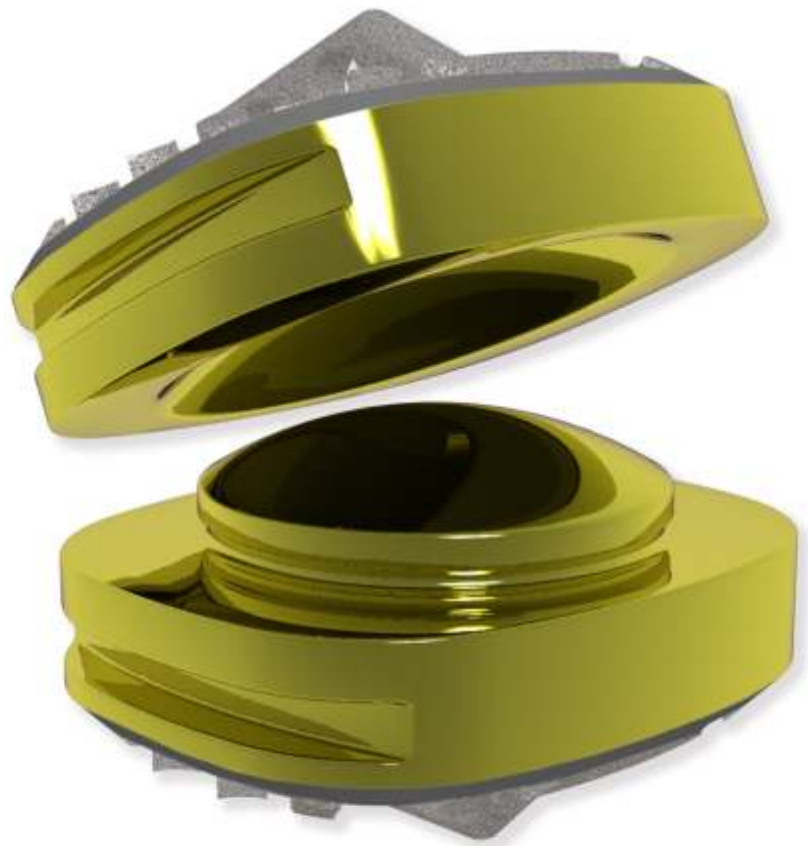
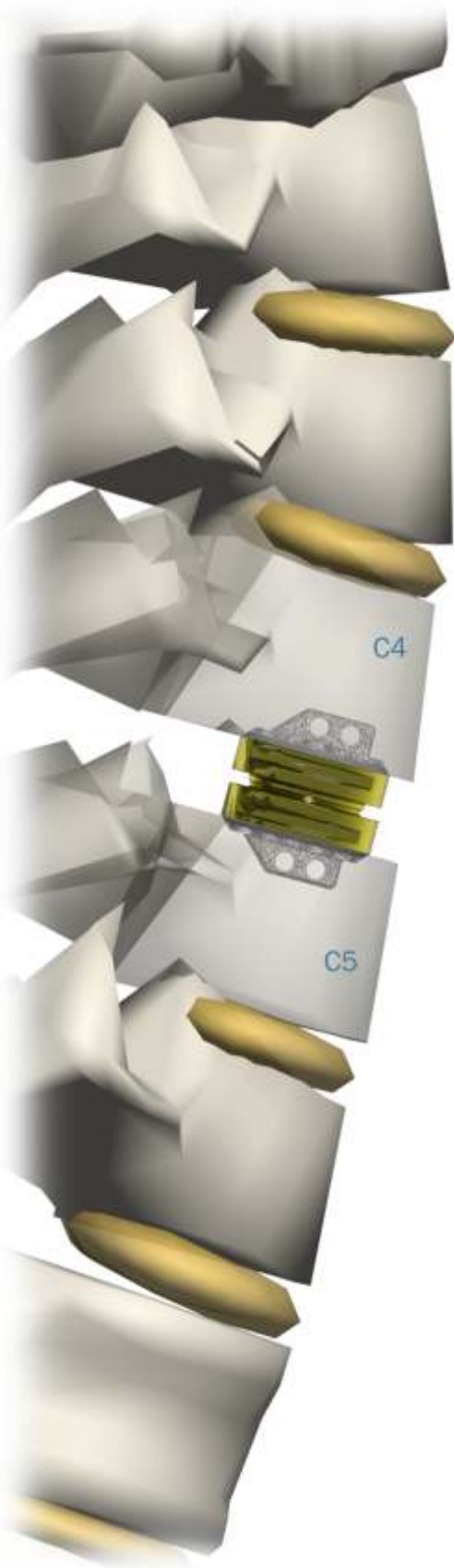


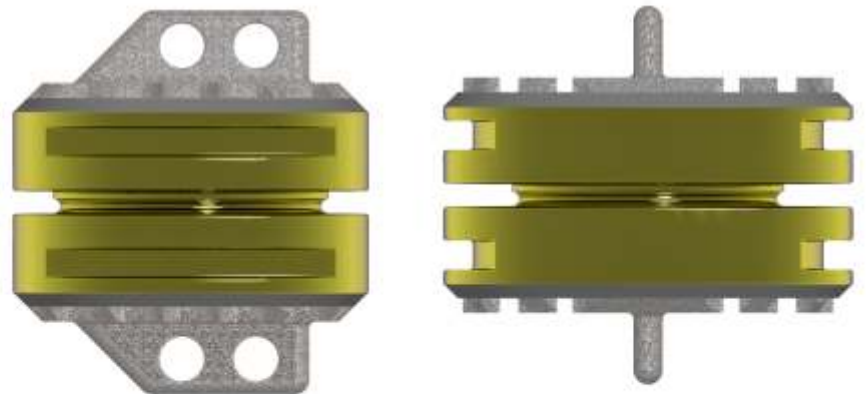


## ACD - ANTERIOR CERVICAL DISC

METAL-ON-METAL SINGLE KEEL MOBILE DISC REPLACEMENT SYSTEM



2 Part titanium mobile disc replacement with single keel



ACD - ANTERIOR CERVICAL DISC

METAL-ON-METAL SINGLE KEEL MOBILE DISC REPLACEMENT SYSTEM



# ACD - ANTERIOR CERVICAL DISC METAL-ON-METAL SINGLE KEEL MOBILE DISC REPLACEMENT SYSTEM

## Description

## Cat#

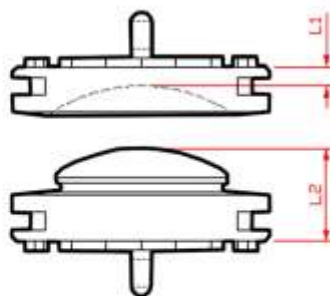
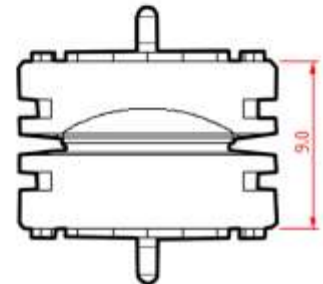
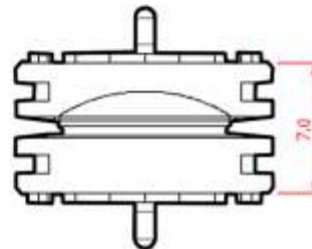
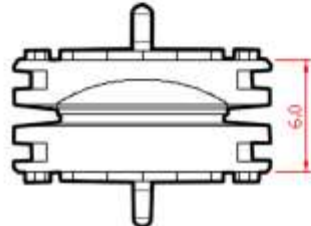
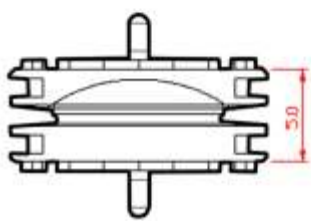
Anterior Cervical Disc Single Keel 12mm x 14mm Superior Size 1	SS7154
Anterior Cervical Disc Single Keel 12mm x 14mm Superior Size 2	SS7155
Anterior Cervical Disc Single Keel 12mm x 14mm Superior Size 3	SS7156
Anterior Cervical Disc Single Keel 12mm x 14mm Superior Size 4	SS7157
Anterior Cervical Disc Single Keel 12mm x 14mm Inferior Size 1	SS7158
Anterior Cervical Disc Single Keel 12mm x 14mm Inferior Size 2	SS7159
Anterior Cervical Disc Single Keel 12mm x 14mm Inferior Size 3	SS7160
Anterior Cervical Disc Single Keel 12mm x 14mm Inferior Size 4	SS7161
Anterior Cervical Disc Single Keel 14mm x 14mm Superior Size 1	SS7162
Anterior Cervical Disc Single Keel 14mm x 14mm Superior Size 2	SS7163
Anterior Cervical Disc Single Keel 14mm x 14mm Superior Size 3	SS7164
Anterior Cervical Disc Single Keel 14mm x 14mm Superior Size 4	SS7165
Anterior Cervical Disc Single Keel 14mm x 14mm Inferior Size 1	SS7166
Anterior Cervical Disc Single Keel 14mm x 14mm Inferior Size 2	SS7167
Anterior Cervical Disc Single Keel 14mm x 14mm Inferior Size 3	SS7168
Anterior Cervical Disc Single Keel 14mm x 14mm Inferior Size 4	SS7169

Size 1

Size 2

Size 3

Size 4



	Size 1	Size 2	Size 3	Size 4
L1	0.5mm	1.0mm	1.5mm	2.5mm
L2	4.5mm	5.0mm	5.5mm	6.5mm